

# MONTHLY MEMBERSHIP PROGRESS REPORT

LOCATION NEW YORK

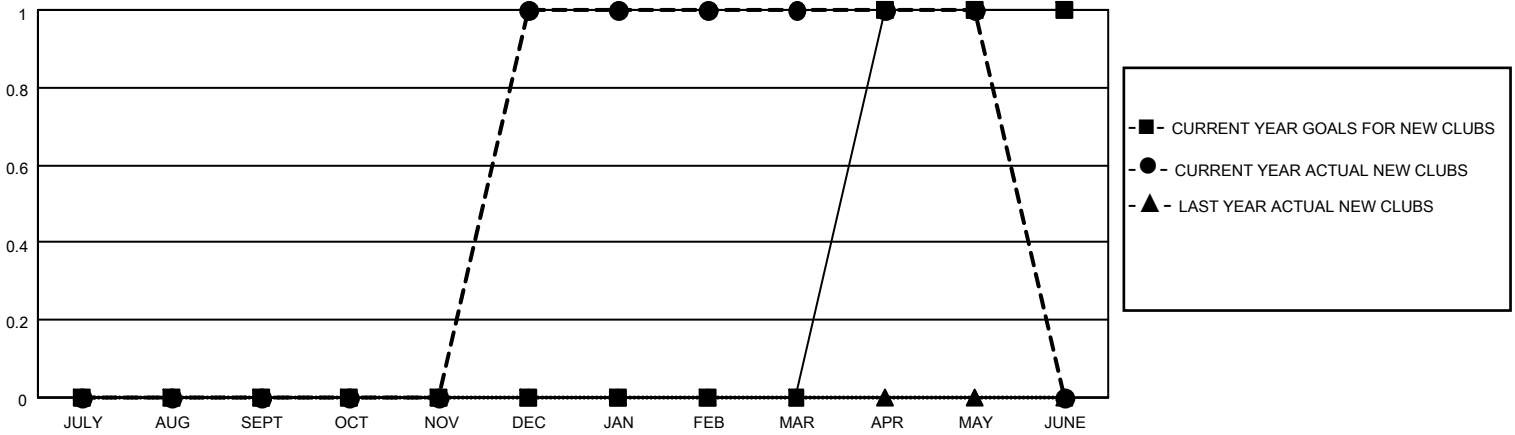
District 20 K2

Results as of: 5/31/2022

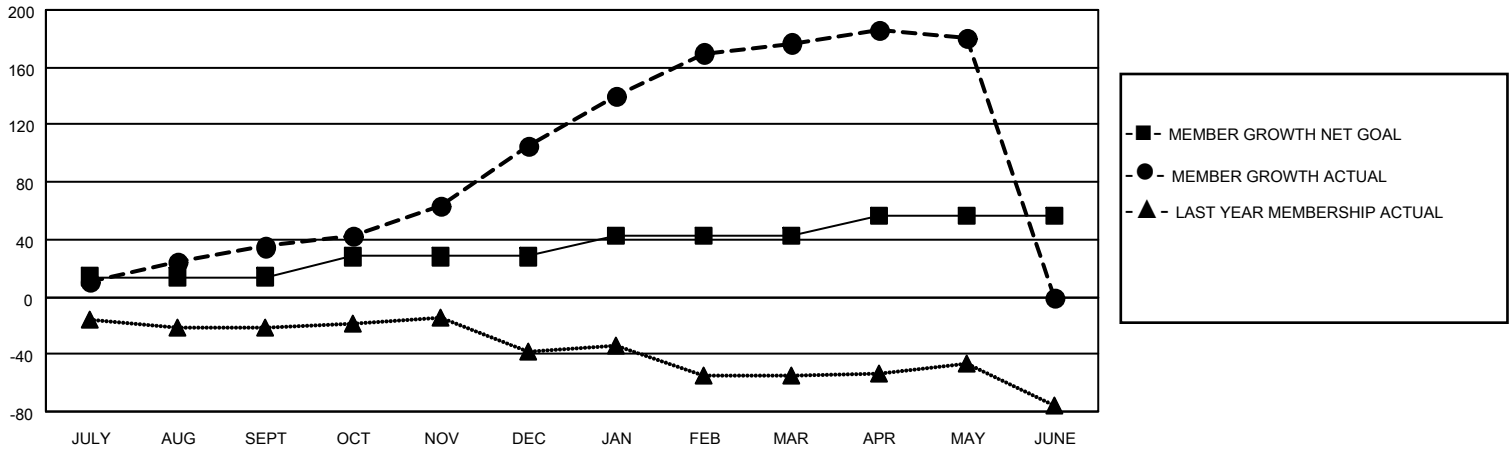
Clubs			
RESULTS FOR 2021-2022			
QUARTER	NEW CLUB GOAL	NEW CLUBS	DROPPED CLUBS
JULY/AUG/SEPT	0	0	0
OCT/NOV/DEC	0	1	0
JAN/FEB/MAR	0	0	0
APR/MAY/JUNE	1	0	0

Members			
RESULTS FOR 2021-2022			
QUARTER	MEMBER GROWTH NET GOAL	MEMBER GROWTH ACTUAL	DROPPED MEMBERS ACTUAL (including transfers)
JULY/AUG/SEPT	14	59	19
OCT/NOV/DEC	14	91	19
JAN/FEB/MAR	14	121	26
APR/MAY/JUNE	14	15	10

**GOALS AND ACTUAL NEW CLUBS CUMULATIVE**



**GOALS AND ACTUAL MEMBERS CUMULATIVE**



**DROPPED CLUBS: 0**

**31 CLUBS OF 36 ADDED 1 OR MORE NEW MEMBERS**

**GENDER DISTRIBUTION**

MALE	734 (56.77%)
FEMALE	557 (43.08%)
NON BINARY	0 (0.00%)
PREFER NOT TO ANSWER	2 (0.15%)

**DROPPED MEMBERS**

[CLICK HERE FOR CUMULATIVE MEMBERSHIP DATA](#)

DECEASED	14
CLUB CANCELLED	0
OTHER	59
<b>TOTAL</b>	<b>73</b>

TOTAL FAMILY UNIT MEMBERS 223

FAMILY MEMBERS PAYING HALF DUES 119